



INSTALLATION INSTRUCTIONS: ULTRA REAR BUMPER

Thank you for your purchase of Crawler Conceptz Ultra Series Rear Bumper. While this bumper is easily installed with basic hand tools and general mechanical knowledge, it is advised to seek help from a professional. These instructions are a step by step tutorial on how to remove the factory bumper and install the Ultra Series Rear Bumper. However, if you need further direction please contact us at (951) 654-0136 or Support@crawlerconceptz.com.

<u>REQUIRED TOOLS</u>	<u>PART LIST</u>
<ul style="list-style-type: none"> • RATCHET • RATCHET EXTENSION • 16MM SOCKET • 18 MM SOCKET • 9/16" SOCKET • 3/4" DEEP SOCKET • Drill gun • Drill bits stepping up to 1" • Cutting Oil (or other lubricant) • Black paint • Felt pen 	<ul style="list-style-type: none"> • (1) ULTRA SERIES REAR BUMPER • (4) 10MM bolts reused from factory bumper • (6) 3/8" Gr. 8 FLAT WASHER • (6) 3/8"-16x1 1/4" Gr. 8 BOLT • (6) 3/8"-16 CLIP NUT

NOTE: INSTRUCTIONS WERE DONE USING A 2014 WRANGLER UNLIMITED AND AN ULTRA REAR BUMPER WITH TIRE CARRIER. WHILE THIS BUMPER FITS 2007—PRESENT JEEP WRANGLERS, THERE MAY BE SOME DIFFERENCES BETWEEN MODEL YEARS.

STEP 1: REMOVE FACTORY REAR BUMPER

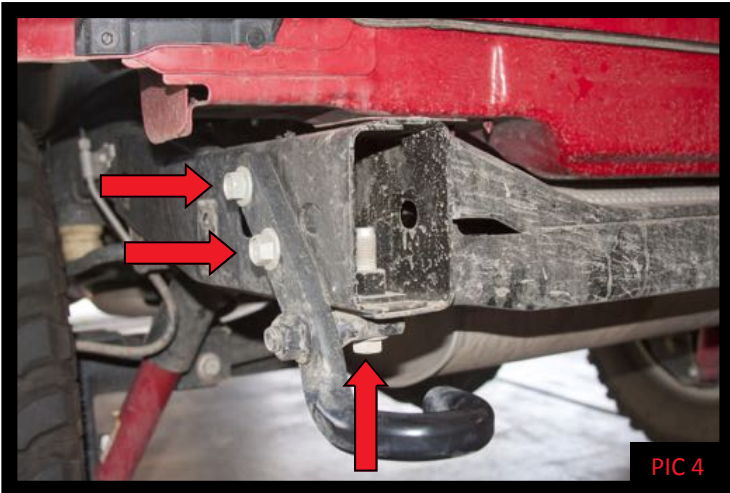
1a—Using a 3/4” deep socket remove the lug nuts holding the factory spare tire and set aside. (You don’t have to do this, but it gives you more room to work.)

1b—Using a 16mm socket remove the 8 bolts holding the factory rear bumper on. Save 4 of these bolts for use later. (pic 1, 2, & 3)



1c — Remove the bumper by pulling up and away from the vehicle.

STEP 2: REMOVE TOW HOOK



Using an 18mm socket remove the three bolts holding the tow hook on. Discard tow hook, bracket inside frame rail, and the three bolts. (pic 4)

STEP 3: INSTALL THE BUMPER

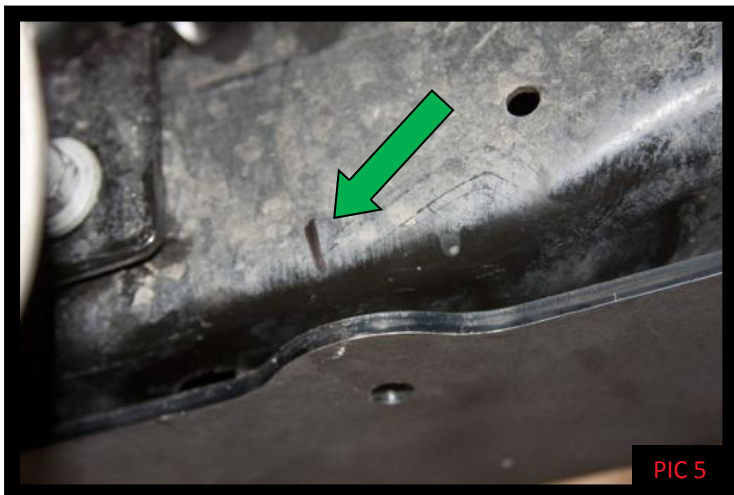
Step 3a— With assistance install the Ultra series rear bumper and use the four bolts retained in step 1 to hold in place. DO NOT TIGHTEN



NOTE: Not all frame models have the hole indicated by the red arrow. If your frame does not, mark with a felt tip pin for drilling out later. (pic 5)

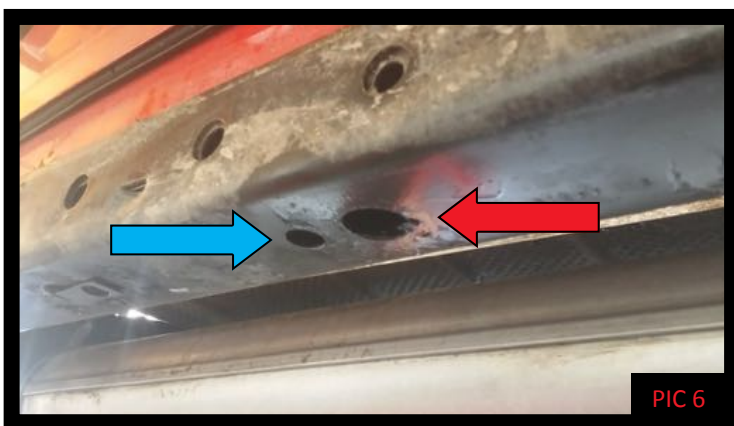
OPTIONAL REINFORCEMENT: These steps are optional, but recommended for the most strength. If you chose to skip this do not do any step that starts with “Option”.

STEP 3: INSTALL THE BUMPER



Option Step 1— There are four holes along the bottom of the bumper. Make a mark on the frame cross member noting where these holes are (green arrow).

Step 3b — With assistance remove the Ultra Series Rear Bumper.



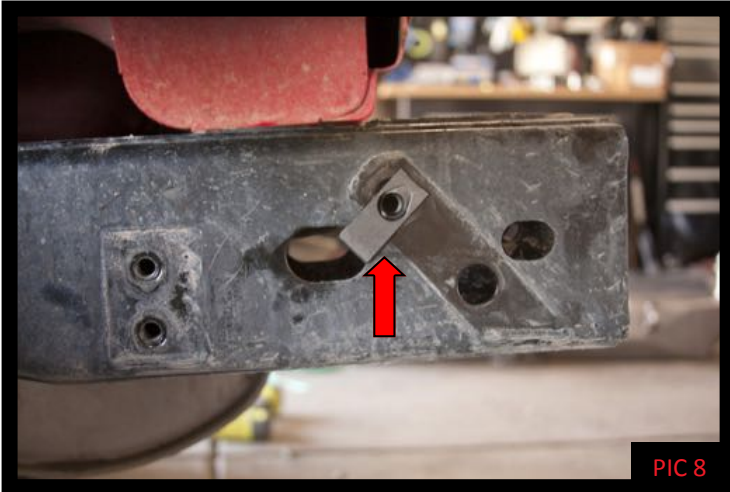
Option Step 2— Measure 1" from the edge of the factory hole (blue arrow) and drill a 1" hole (red arrow). Start with a 1/4" drill bit and step up to a 1" drill bit.



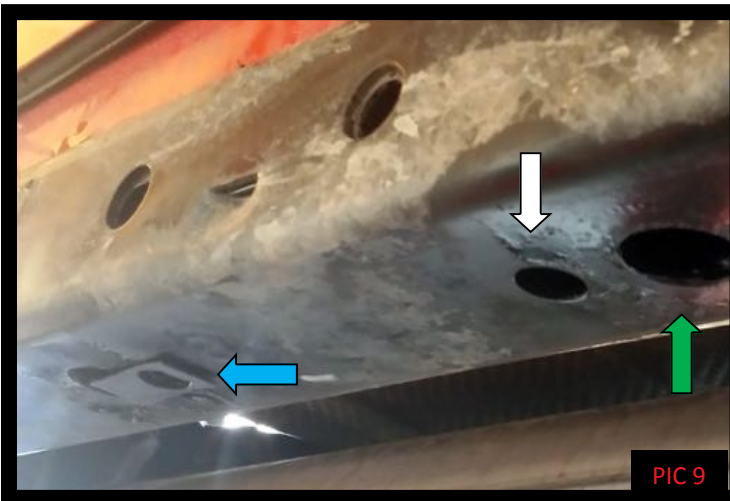
Step 3c— If in step 3a you made marks to drill out a hole in your frame rail (pic 5 red arrow) do so at this time. Start with a 1/4" drill bit and work up to a 1/2" drill bit.

Step 3d— Paint bare metal that may be exposed from Option Step 2 or Step 3c

STEP 3: INSTALL THE REAR BUMPER cont.



Step 3e— Insert a clip nut on each frame as indicated by the red arrow. (pic 8)



Option Step 3 — Insert a clip nut through the holes drilled in Option Step 2 (green arrow) into the whole marked in Option Step 1 (white arrow). The blue arrow shows a clip nut installed. (pic 9)

Step 3f— With assistance install the bumper. Start the four 10mm bolts retained in Step 1b, start 3/8" bolts into all clip nuts. Once all bolts are started, check for proper alignment and tight with 16mm or 9/16" sockets.

STEP 4: SPARE TIRE

If you opted to get the Ultra Series Rear Bumper with Tire Carrier follow those instructions next. If not, reinstall the spare tire.



Thanks again for your purchase from Crawler Conceptz. We hope you enjoy your new Ultra Series Rear Bumper and if you have any other needs please contact us at (951) 654-0136 or Support@crawlerconceptz.com.